

\$495,000 - (unit #1412) 1212 Nuuanu Avenue, Honolulu

MLS® #202504908

\$495,000

1 Bedroom, 1.00 Bathroom, 671 sqft

Residential on 1.67 Acres

CHINATOWN, Honolulu, HI

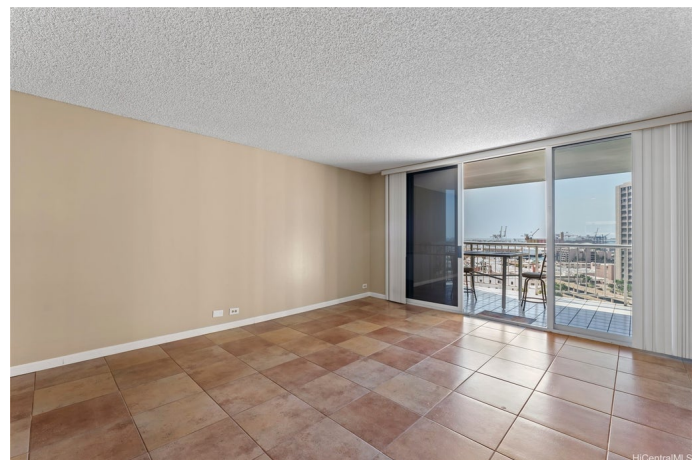
Price Reduction, Motivated Seller! Come downtown and live a luxury lifestyle at Honolulu Park Place. This building has it all and it's Pet Friendly! You can relax and enjoy oasis style tropical gardens, koi ponds, private pagodas with BBQ facilities, a heated pool, whirlpool, a fully equipped health club with a full gym, locker rooms, sauna/steam room, or make an appointment in the massage room. Sports enthusiasts will never be bored with racquetball, tennis, indoor basketball court, golf driving cages, billiards, ping pong, and even a bowling alley. The reasonable maintenance fee also covers hot water, sewer, cable, and internet, and AC maintenance. There are over 40 guest parking stalls, 24-hour security, a restaurant, secured covered bike storage, car wash area, and fantastic staff that keep HPP in great condition. This corner end unit has a 157-sf private covered lanai with amazing stunning views of the Pacific and Honolulu Harbor. It's a very open floor plan, providing plenty of natural light with upgrades that include ceramic tile flooring throughout, granite countertops, newer stainless-steel appliances, full size W/D, garage parking, and extra storage. Come take a look!

Built in 1989

Essential Information

MLS® #

202504908



Price	\$495,000
Bedrooms	1
Bathrooms	1.00
Full Baths	1
Square Footage	671
Acres	1.67
Year Built	1989
Type	Residential
Sub-Type	Condominium
Style	High Rise
Status	Active Under Contract

Community Information

Address	(unit #1412) 1212 Nuuanu Avenue
Area	Metro
Subdivision	CHINATOWN
City	Honolulu
County	Oahu
State	HI
Zip Code	96817
Condo Name	Honolulu Park Place

Amenities

Parking Spaces	1
Parking	Assigned, Covered, Garage, Guest, One Space, On Street, Secured
View	Canal, City, Coastline, Mountain(s), Ocean, Sunset
Has Pool	Yes

Interior

Interior Features	Storage
Cooling	Central Air
Stories	One

Exterior

Exterior	Concrete, Double Wall
----------	-----------------------

School Information

Elementary	Kauluwela
Middle	Keelikolani

High Mckinley

Additional Information

Days on Market 243
Lease Fee \$0
Monthly Maintenance Fee \$914

Listing Details

Listing Office American Dream Realty LLC



Based on information from the Multiple Listing Service of the HiCentral MLS®, Ltd. active listings last updated on October 13th, 2025 at 9:09am HST. Information is deemed reliable but not guaranteed. Copyright: 2025 by the HiCentral MLS®, Ltd. Listing information is provided exclusively for consumers' personal, non-commercial use and may not be used for any purpose other than to identify prospective properties consumers may be interested in purchasing. Some of the active listings appearing on this site may be listed by other REALTORS®. If you are interested in those active listings, our company may represent you as the buyer's agent. If the active listing you are interested in is our company's active listing, you may speak to one of our agents regarding your options for representation.