

\$399,000 - (unit #1604) 5180 Likini Street, Honolulu

MLS® #202502986

\$399,000

2 Bedroom, 1.00 Bathroom, 677 sqft

Residential on 1.60 Acres

SALT LAKE, Honolulu, HI

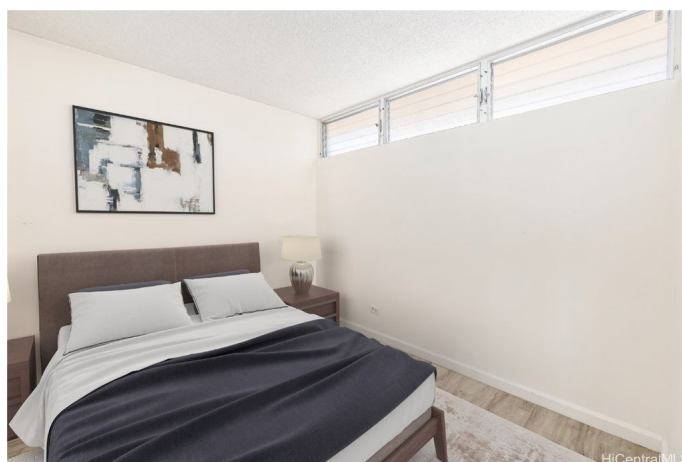
Welcome Home to Your Cozy Retreat at Royal Towers !Nestled on the 16th floor, this charming condo offers stunning panoramic views from both sides, creating the perfect backdrop for everyday moments. Bright and airy, the space is filled with natural light, highlighting the updated flooring that flows throughout the home. Located in the heart of the Salt Lake area, this condo is just a stoneâ€™s throw away from dining, shopping, and easy access to highwaysâ€™putting everything you need right at your doorstep. Perfect for starting your homeownership journey. With a dedicated parking stall, youâ€™ll always have a secure place for your vehicle, and the peaceful neighborhood is perfect for leisurely strolls. And if you're in the military, you'll appreciate the close proximity to local bases, offering an easy commute and the potential for a smooth transition. At a fantastic price and with a 2.75% VA Assumable rate with an approximate mortgage balance of \$369,858.08 and \$1,843.39 monthly payment. This home is a rare findâ€™perfect for first-time buyers, military personnel, or anyone looking for a smart investment. Donâ€™t miss your chance to make this lovely condo yours!

Built in 1972

Essential Information

MLS® # 202502986

Price \$399,000



Bedrooms	2
Bathrooms	1.00
Full Baths	1
Square Footage	677
Acres	1.60
Year Built	1972
Type	Residential
Sub-Type	Condominium
Style	High Rise
Status	Active Under Contract

Community Information

Address	(unit #1604) 5180 Likini Street
Area	Metro
Subdivision	SALT LAKE
City	Honolulu
County	Oahu
State	HI
Zip Code	96818
Condo Name	Royal Towers

Amenities

Parking Spaces	1
Parking	Assigned, One Space
View	Mountain(s), Golf Course
Has Pool	Yes

Interior

Stories	One
---------	-----

Exterior

Exterior	Concrete
----------	----------

Additional Information

Days on Market	242
Lease Fee	\$0
Monthly Maintenance Fee	\$601

Listing Details

Based on information from the Multiple Listing Service of the HiCentral MLS®, Ltd. active listings last updated on October 13th, 2025 at 8:48pm HST. Information is deemed reliable but not guaranteed. Copyright: 2025 by the HiCentral MLS®, Ltd. Listing information is provided exclusively for consumers' personal, non-commercial use and may not be used for any purpose other than to identify prospective properties consumers may be interested in purchasing. Some of the active listings appearing on this site may be listed by other REALTORS®. If you are interested in those active listings, our company may represent you as the buyer's agent. If the active listing you are interested in is our company's active listing, you may speak to one of our agents regarding your options for representation.