

\$820,000 - (unit #425) 91-6221 Kapolei Parkway, Ewa Beach

MLS® #202502977

\$820,000

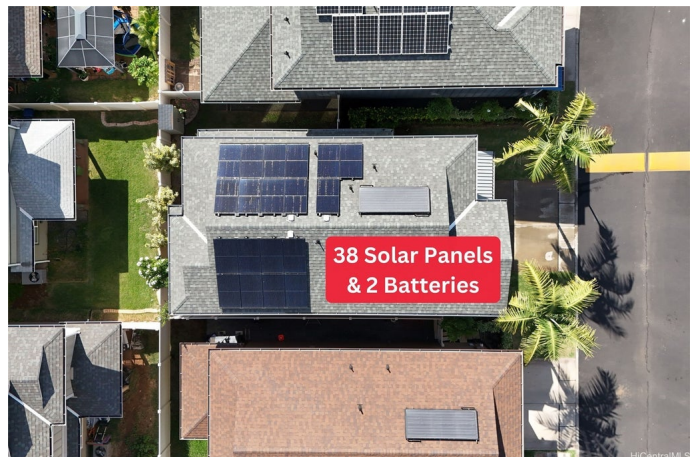
4 Bedroom, 2.50 Bathroom, 1,526 sqft
Residential on 0.09 Acres

EWA GEN PARKSIDE, Ewa Beach, HI

PRICE REDUCED! Are you looking for a modern home with 38-panel solar system, 2 batteries and solar hot water to help bring down your living expenses?! If so, this home may be for you! Assumable VA loan at 2.25% with current balance of \$550,000! This beautiful home was built in 2014 and is located in the coveted Parkside community along Kapolei Parkway in Ewa Beach, located just blocks away from the Laulani Village Shopping Center with stores like Safeway, City Mill Hardware, Petco, Buffalo Wild Wings, UPS Store and much more. The home features 4 bedrooms, 2.5 baths and a spacious living area of approximately 1,526 sq. ft. The home also features a primary bedroom with ensuite and a large walk-in closet, central AC, Nest thermostat, and room for up to 4 vehicles (2 in the garage and 2 more on the driveway). The Parkside neighborhood has plenty of extra parking spaces for friends or family who are visiting with 7 guest stalls adjacent to the home. In addition, the neighborhood also features a lush community amenities area with event space, eating areas and a large pool, all close enough to enjoy without having to walk very far, but far enough away to block excessive noise.

Built in 2014

Essential Information



MLS® #	202502977
Price	\$820,000
Bedrooms	4
Bathrooms	2.50
Full Baths	2
Half Baths	1
Square Footage	1,526
Acres	0.09
Year Built	2014
Type	Residential
Sub-Type	Single Family Residence
Style	Detached
Status	Active Under Contract

Community Information

Address	(unit #425) 91-6221 Kapolei Parkway
Area	Ewaplain
Subdivision	EWA GEN PARKSIDE
City	Ewa Beach
County	Oahu
State	HI
Zip Code	96706

Amenities

Utilities	Cable Available, Electricity Available, High Speed Internet Available, Underground Utilities, Water Available
Parking Spaces	4
Parking	Driveway, Garage, Three or more Spaces
View	None
Pool	Community

Interior

Stories	Two
---------	-----

Exterior

Exterior	Double Wall, Wood Frame
----------	-------------------------

School Information

Elementary	Keoneula
------------	----------

Middle	Ewa Makai
High	Campbell

Additional Information

Days on Market	254
HOA Fees	50
Lease Fee	\$0
Monthly Maintenance Fee	\$889

Listing Details

Listing Office	Paradise Real Estate Brokers
----------------	------------------------------

Based on information from the Multiple Listing Service of the HiCentral MLS®, Ltd. active listings last updated on October 12th, 2025 at 11:48pm HST. Information is deemed reliable but not guaranteed. Copyright: 2025 by the HiCentral MLS®, Ltd. Listing information is provided exclusively for consumers' personal, non-commercial use and may not be used for any purpose other than to identify prospective properties consumers may be interested in purchasing. Some of the active listings appearing on this site may be listed by other REALTORS®. If you are interested in those active listings, our company may represent you as the buyer's agent. If the active listing you are interested in is our company's active listing, you may speak to one of our agents regarding your options for representation.