

\$260,000 - (unit #2309) 410 Atkinson Drive, Honolulu

MLS® #202502806

\$260,000

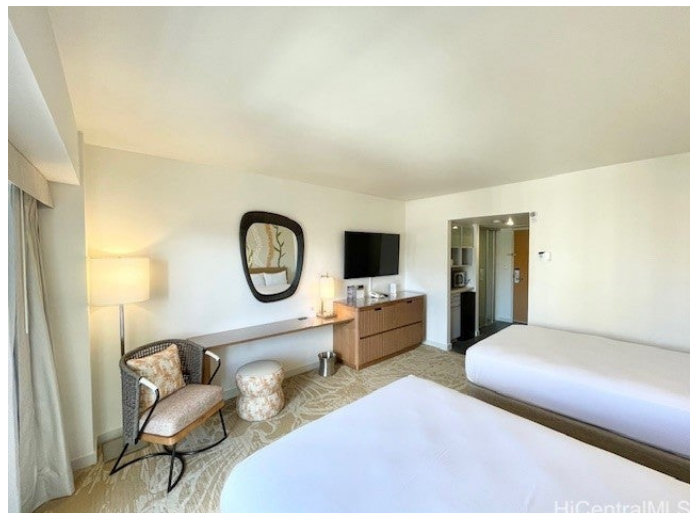
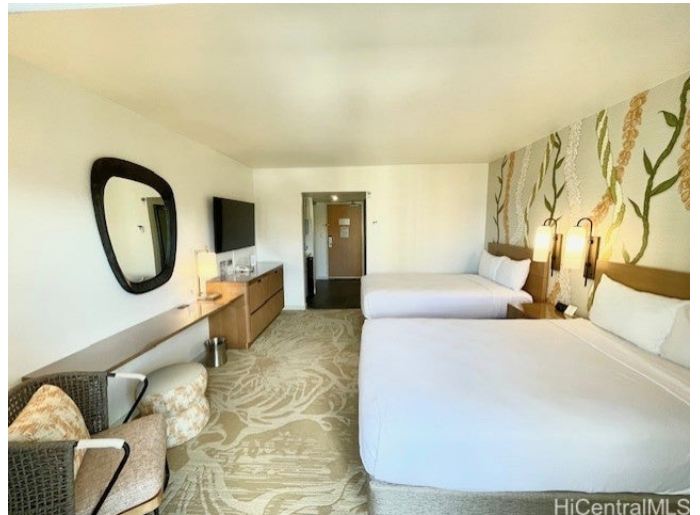
0 Bedroom, 1.00 Bathroom, 297 sqft

Residential on 0.00 Acres

ALA MOANA, Honolulu, HI

NEWLY REMODELED UNIT! A desirable studio end unit in the Waikiki Tower of the Ala Moana Hotel, offering an unparalleled ocean view right outside your open lanai. Positioned on the ocean end of the building, the "09" unit allows you to enjoy breathtaking vistas of the Pacific. Own your piece of paradise with this prime real estate, perfect for short-term rentals, making it an excellent investment opportunity. Located just steps from Ala Moana Shopping Center, youâ€™™ll have access to world-class shopping, dining, and entertainment. Signature Steak House is on the very top of Ala Moana Hotel. The Hawaii Convention Center is also just a short distance away, adding to the unit's appeal for both business and leisure travelers. For beach lovers, youâ€™™re only minutes away from Ala Moana Beach Park, ideal for swimming, sunbathing, and picnics with family and friends. Donâ€™™t miss the stunning Magic Island, a popular spot within the park that offers scenic views and calm waters. With the perfect combination of convenience, luxury, and investment potential, this unit is a rare opportunity to own a piece of one of Honoluluâ€™™s most coveted locations. Shown by appointment only.

Built in 1970



Essential Information

MLS® #	202502806
Price	\$260,000
Bathrooms	1.00
Full Baths	1
Square Footage	297
Acres	0.00
Year Built	1970
Type	Residential
Sub-Type	Condominium
Status	Active Under Contract

Community Information

Address	(unit #2309) 410 Atkinson Drive
Area	Metro
Subdivision	ALA MOANA
City	Honolulu
County	Oahu
State	HI
Zip Code	96814
Condo Name	Ala Moana Hotel Condo

Amenities

Parking	None, On Street
View	City, Mountain(s), Ocean, Sunrise, Sunset
Has Pool	Yes

Interior

Cooling	Central Air
Stories	One

Exterior

Exterior	Concrete, Double Wall
----------	-----------------------

Additional Information

Days on Market	257
Lease Fee	\$0
Monthly Maintenance Fee	\$1,401

Listing Details

Based on information from the Multiple Listing Service of the HiCentral MLS®, Ltd. active listings last updated on October 12th, 2025 at 7:20pm HST. Information is deemed reliable but not guaranteed. Copyright: 2025 by the HiCentral MLS®, Ltd. Listing information is provided exclusively for consumers' personal, non-commercial use and may not be used for any purpose other than to identify prospective properties consumers may be interested in purchasing. Some of the active listings appearing on this site may be listed by other REALTORS®. If you are interested in those active listings, our company may represent you as the buyer's agent. If the active listing you are interested in is our company's active listing, you may speak to one of our agents regarding your options for representation.