

\$250,000 - (unit #1606) 84-680 Kili Drive, Waianae

MLS® #202502124

\$250,000

1 Bedroom, 1.00 Bathroom, 680 sqft

Residential on 14.07 Acres

MAKAHA, Waianae, HI

Awesome View from high floor. Includes all the utilities and central air.

Close to the elevators, laundry room and mailbox. Community pool and BBQ.

Storage closet outside the unit. Well kept grounds, 24/7 security.

Tenant occupied and pays on time.

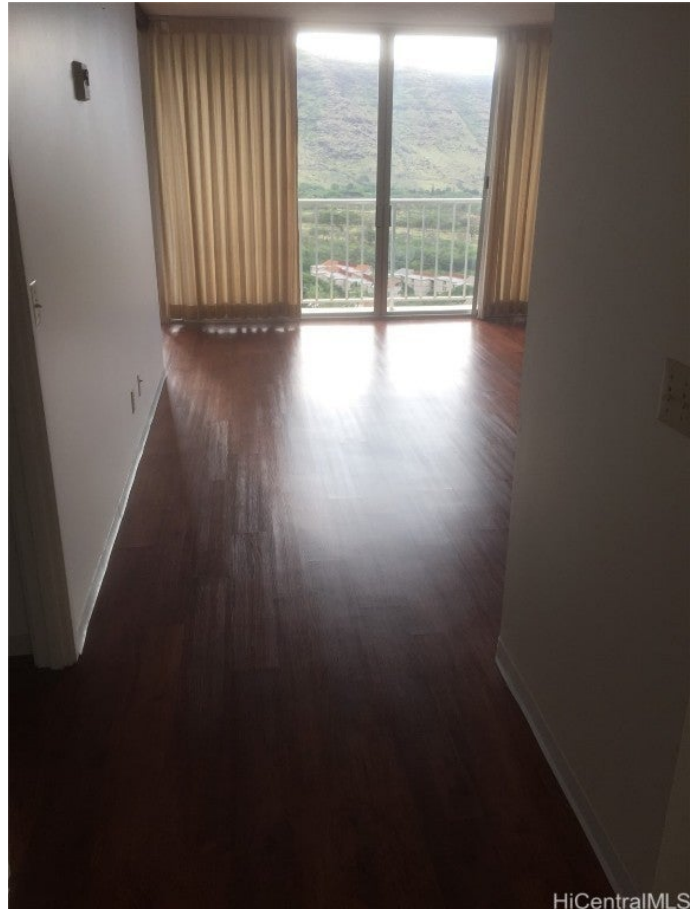
Built in 1970

Essential Information

MLS® #	202502124
Price	\$250,000
Bedrooms	1
Bathrooms	1.00
Full Baths	1
Square Footage	680
Acres	14.07
Year Built	1970
Type	Residential
Sub-Type	Condominium
Style	High Rise
Status	Active

Community Information

Address	(unit #1606) 84-680 Kili Drive
Area	Leeward
Subdivision	MAKAHA
City	Waianae
County	Oahu



State HI
Zip Code 96792
Condo Name Makaha Valley Towers

Amenities

Parking Spaces 1
Parking Guest, One Space, Open, Se
View Coastline, Mountain(s), Ocea
Has Pool Yes
Pool Heated

Interior

Interior Features BedroomOnMainLevel,Storage
Cooling Central Air

Exterior

Exterior Concrete

School Information

Elementary Makaha
Middle Waianae
High Waianae

Additional Information

Days on Market 269
Lease Fee \$0
Monthly Maintenance Fee \$1,187

Listing Details

Listing Office West Oahu Realty, Inc.

Based on information from the Multiple Listing Service of the HiCentral MLS®, Ltd. active listings last updated on October 12th, 2025 at 5:04pm HST. Information is deemed reliable but not guaranteed. Copyright: 2025 by the HiCentral MLS®, Ltd. Listing information is provided exclusively for consumers' personal, non-commercial use and may not be used for any purpose other than to identify prospective properties consumers may be interested in purchasing. Some of the active listings appearing on this site may be listed by other REALTORS®. If you are interested in those active listings, our company may represent you as the buyer's agent. If the active listing you are interested in is our company's active listing, you may speak to one of our agents regarding your options for representation.

