

\$849,000 - (unit #2406) 500 University Avenue, Honolulu

MLS® #202502096

\$849,000

3 Bedroom, 2.50 Bathroom, 1,432 sqft

Residential on 159.37 Acres

KAPIOLANI, Honolulu, HI

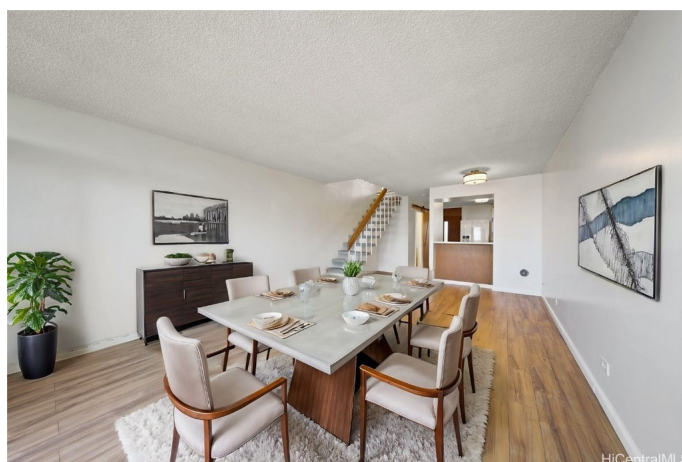
Experience the ultimate in island living with this rare 2-story sub-penthouse unit in the highly coveted Park Tower at Ala Wai Plaza. Boasting breathtaking 180-degree panoramic views of Diamond Head, Waikiki, the ocean, and cityscape, this sky home offers unparalleled vistas and a front-row seat to city park, canal, ocean & fireworks. The main floor features living & dining area, a U-shaped kitchen & powder room. The double-height, private lanai showcases postcard-worthy views of Honolulu. Upstairs, you'll find three generously sized bedrooms and two full bathrooms, offering ample space and privacy. Hall closets, and the in-suite laundry add convenience. This unit comes with a covered parking stall located near the easy-access ramp, ensuring effortless entry and exit from the complex. AWP offers fantastic amenities, including a gym, swimming pool, BBQ patio, party room, and on-site security. AWP is strategically located nearby private and public schools and is just a short drive to the University of Hawaii campus, making it ideal for families and professionals alike. Make an offer today to claim this iconic island retreat your new home.

Built in 1970

Essential Information

MLS® # 202502096

Price \$849,000



Bedrooms	3
Bathrooms	2.50
Full Baths	2
Half Baths	1
Square Footage	1,432
Acres	159.37
Year Built	1970
Type	Residential
Sub-Type	Condominium
Style	High Rise, Multi-Level
Status	Active

Community Information

Address	(unit #2406) 500 University Avenue
Area	Metro
Subdivision	KAPIOLANI
City	Honolulu
County	Oahu
State	HI
Zip Code	96826
Condo Name	Ala Wai Plaza

Amenities

Parking Spaces	1
Parking	Assigned, Covered, Guest, One Space
View	Canal, City, Mountain(s), Ocean
Has Pool	Yes

Interior

Stories	Multi/Split
---------	-------------

Exterior

Exterior	Concrete
----------	----------

Additional Information

Days on Market	267
Lease Fee	\$0
Monthly Maintenance Fee	\$1,169

Listing Details

Based on information from the Multiple Listing Service of the HiCentral MLS®, Ltd. active listings last updated on October 11th, 2025 at 2:34pm HST. Information is deemed reliable but not guaranteed. Copyright: 2025 by the HiCentral MLS®, Ltd. Listing information is provided exclusively for consumers' personal, non-commercial use and may not be used for any purpose other than to identify prospective properties consumers may be interested in purchasing. Some of the active listings appearing on this site may be listed by other REALTORS®. If you are interested in those active listings, our company may represent you as the buyer's agent. If the active listing you are interested in is our company's active listing, you may speak to one of our agents regarding your options for representation.