

\$850,000 - (unit #2503) 1000 Auahi Street, Honolulu

MLS® #202423309

\$850,000

1 Bedroom, 1.00 Bathroom, 509 sqft

Residential on 0.00 Acres

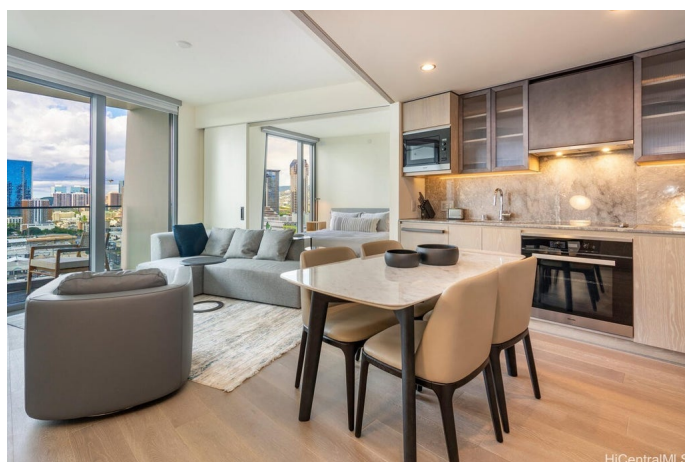
KAKAAKO, Honolulu, HI

This well-appointed 1-bedroom unit is efficiently designed to maximize space, offering a cozy and comfortable living experience. A sliding door between the living room and bedroom provides flexibility, allowing you to create an open layout perfect for entertaining family and friends. Step onto the lanai to embrace coastal contemporary living, where soothing island breezes complement the views of Kewalo Basin Yacht Harbor and Victoria Ward Park below. The unit features wood flooring throughout, except in the bathroom.

Koula offers direct access to Victoria Ward Park and is ideally located near the vibrant retail, dining, and entertainment options of Ward Village. It's also within walking distance of Honolulu's flagship Whole Foods store. Designed by award-winning architect Jeanne Gang, recognized as one of Time Magazine's most influential people of 2019, Koula offers resort-style amenities, including a spa-like fitness center, lap pool, two spas, poolside event rooms, cabanas, a Grand Lanai and lounge, BBQ pavilions, children's play area, guest suites, and a dog park. In addition, you'll enjoy the close proximity to Ala Moana Beach Park and Ala Moana Shopping Center.

Built in 2022

Essential Information



MLS® #	202423309
Price	\$850,000
Bedrooms	1
Bathrooms	1.00
Full Baths	1
Square Footage	509
Acres	0.00
Year Built	2022
Type	Residential
Sub-Type	Condominium
Style	High Rise
Status	Active Under Contract

Community Information

Address	(unit #2503) 1000 Auahi Street
Area	Metro
Subdivision	KAKAAKO
City	Honolulu
County	Oahu
State	HI
Zip Code	96814
Condo Name	Koula

Amenities

Parking Spaces	1
Parking	Covered, One Space
View	Canal, City, Coastline, Ocean, Sunset
Has Pool	Yes
Pool	Heated

Interior

Cooling	Central Air
Stories	One

Exterior

Exterior	Other, Concrete, Double Wall, Steel Frame
----------	---

Additional Information

Days on Market	334
----------------	-----

Lease Fee \$0

Monthly Maintenance Fee \$671

Listing Details

Listing Office Jack Tyrrell & Company

Based on information from the Multiple Listing Service of the HiCentral MLS®, Ltd. active listings last updated on October 13th, 2025 at 4:06am HST. Information is deemed reliable but not guaranteed. Copyright: 2025 by the HiCentral MLS®, Ltd. Listing information is provided exclusively for consumers' personal, non-commercial use and may not be used for any purpose other than to identify prospective properties consumers may be interested in purchasing. Some of the active listings appearing on this site may be listed by other REALTORS®. If you are interested in those active listings, our company may represent you as the buyer's agent. If the active listing you are interested in is our company's active listing, you may speak to one of our agents regarding your options for representation.