

\$2,500,000 - Lot 14 Ahaolelo Street, Kaneohe

MLS® #202418249

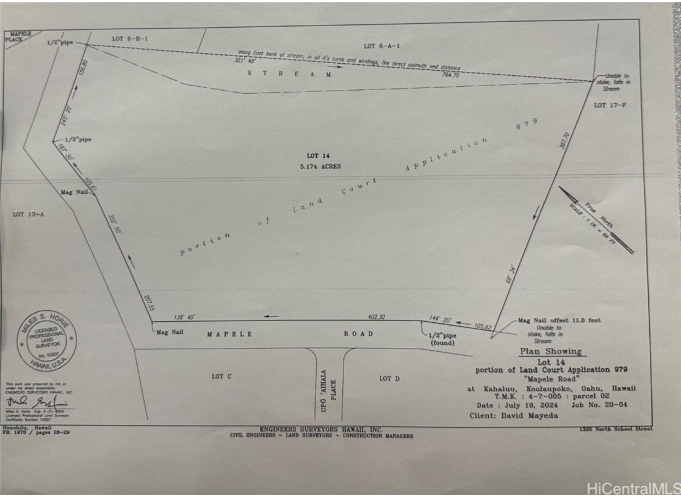
\$2,500,000

0 Bedroom, 0.00 Bathroom,
Land on 5.17 Acres

WAIHEE, Kaneohe, HI

Large open property of 5.17 ac. Fee simple property currently zoned AG-2. Used to grow banana plants flowers.

Must see to appreciate. Farmers in the surrounding areas growing various plants. Nestled near the Koolau Mountains. Do not go on the property. Make appoints with your broker for tours.
Very easy to see.



Essential Information

MLS® #	202418249
Price	\$2,500,000
Bathrooms	0.00
Acres	5.17
Type	Land
Sub-Type	Land
Status	Active

Community Information

Address	Lot 14 Ahaolelo Street
Area	Kaneohe
Subdivision	WAIHEE
City	Kaneohe
County	Oahu
State	HI
Zip Code	96744

Amenities

Utilities	Electricity Available, Sewer Not Available
View	Mountain(s)

Exterior

Exterior Features	None
-------------------	------

School Information

Elementary	Kahaluu
Middle	King
High	Castle

Additional Information

Days on Market	412
Lease Fee	\$0

Listing Details

Listing Office	Solid Foundation R.E. Corp
----------------	----------------------------

Based on information from the Multiple Listing Service of the HiCentral MLS®, Ltd. active listings last updated on October 13th, 2025 at 9:09am HST. Information is deemed reliable but not guaranteed. Copyright: 2025 by the HiCentral MLS®, Ltd. Listing information is provided exclusively for consumers' personal, non-commercial use and may not be used for any purpose other than to identify prospective properties consumers may be interested in purchasing. Some of the active listings appearing on this site may be listed by other REALTORS®. If you are interested in those active listings, our company may represent you as the buyer's agent. If the active listing you are interested in is our company's active listing, you may speak to one of our agents regarding your options for representation.