

\$3,010,828 - 68-2057 Nana Loa St, Waikoloa

MLS® #724447

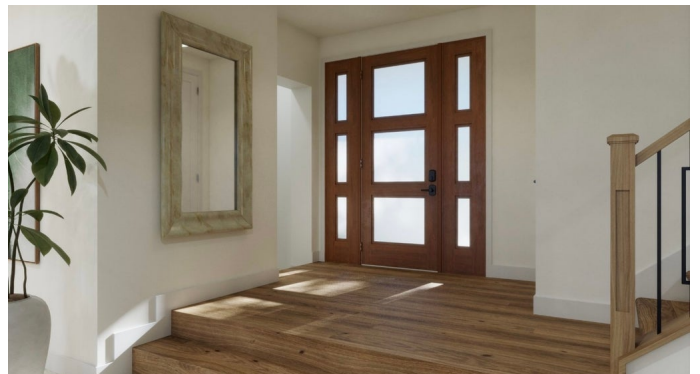
\$3,010,828

4 Bedroom, 5.00 Bathroom, 2,883 sqft

Residential on 0.34 Acres

KEOLALANI AT WAIKOLOA - PHASE 1 INCR
A, Waikoloa, HI

Welcome to Nana Kai, "looking toward the sea", the ultimate Big Island community where dramatic volcanic landscapes meet the serenity of the Pacific Ocean. The 'ALANI Residence 4 on homesite 14 offers ocean and mountain views, a lush front-yard landscape of native flora, creating an inspiring and restorative backdrop every day. This showcase home of more than 2,880 sq. ft, is a classic reference to Hawaiian-inspired architecture with modern comforts. Expansive lanais on both levels provide sheltered year-round outdoor living, a perfect space for dining, entertaining, and relaxing in privacy – the Kohala mountains and ocean views are waiting. The airy interior of the two-story layout resonates throughout the 4 bedrooms and 3 full bathrooms, and common spaces. The second-floor primary suite offers sensational views, with hardwood flooring, large windows, and a spa-like ensuite featuring dual sinks and a large walk-in shower. The main floor offers a guest room that can be optioned as a "multi-generational" suite, library, or home office. The gourmet kitchen features natural stone and wood finishes, stainless steel appliances, and accent lighting. and is intentionally connected to the vaulted great room and dining room, becoming the focal point for entertaining. Large-scale windows draw the natural light inside, framing the unforgettable views of land and sea. The inaugural village of the Nana



Kai master plan will incorporate miles of walking, hiking and biking trails, a community park, clubhouse amenities, and ultimately, a new “walkable” commercial/retail town center.

This is more than a home - it is an island retreat within one of Hawaii’s most sought-after communities that epitomizes “Life On The Big Island”, the most beautiful place on earth.

Photos are renderings of the model residence, actual residence is unfurnished - photos coming soon.

Built in 2025

Essential Information

MLS® #	724447
Price	\$3,010,828
Bedrooms	4
Bathrooms	5.00
Full Baths	4
Half Baths	1
Square Footage	2,883
Acres	0.34
Year Built	2025
Type	Residential
Sub-Type	Single Family Residence
Status	Active

Community Information

Address	68-2057 Nana Loa St
Subdivision	KEOLALANI AT WAIKOLOA - PHASE 1 INCR A
City	Waikoloa
State	HI
Zip Code	96738

Amenities

Parking	Detached
View	Mountain(s), Ocean
Has Pool	Yes

Interior

Interior Features	Cathedral Ceiling(s), Enclosed Lanai, High Ceilings, Vaulted Ceiling(s)
Appliances	Dishwasher, Disposal, Electric Cooktop, Microwave, Oven, Range Hood
Cooling	Air Conditioning

Exterior

Lot Description	Landscaped, Rim Lot
Construction	Double Wall, Wood Frame

Additional Information

Date Listed	October 8th, 2025
Days on Market	4
Zoning	RS-10
HOA Fees	750
HOA Fees Freq.	Monthly

Listing Details

Listing Office	eXp Realty
----------------	------------

IDX is deemed reliable but is not guaranteed accurate by the Hawaii Information Service, Inc. Listing Service. © 2025 Hawaii Information Service. All Rights Reserved.
Listing information last updated on October 12th, 2025 at 12:19pm HST