

\$557,500 - 15-1994 16th Ave, Keaau

MLS® #724429

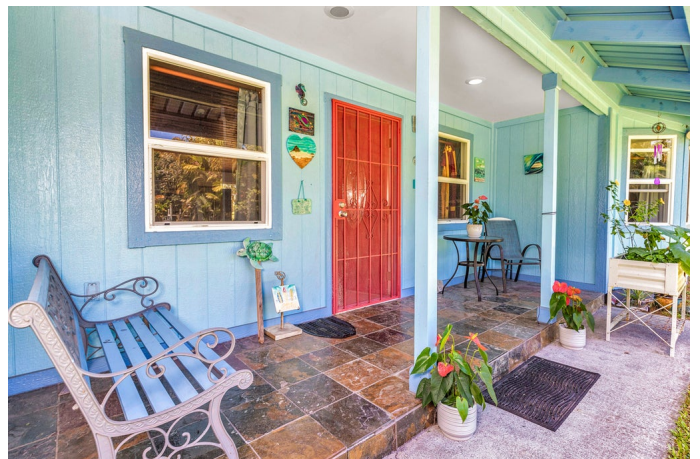
\$557,500

3 Bedroom, 2.00 Bathroom, 1,522 sqft
Residential on 1.00 Acres

HAWAIIAN PARADISE PARK, Keaau, HI

Looking for a beautiful Island Home with a variety of well established producing fruit trees? This fully fenced Paradise Park property may be your dream come true!
This 3 bedroom 2 bath home has a great floor plan, with a large open kitchen/living area & a spacious primary bedroom suite on one side and two bedrooms & a full bath on the other. Custom features include a vaulted wood ceiling & Bay windows.

The kitchen has granite tile countertops and koa wood trimmed cabinets. Your front lanai has slate tile flooring with plenty of room to sit & enjoy your front yard; with mature palms including gorgeous red sealing wax, fan palms, arecas for privacy & more! The gated entrance has beautiful rock walls.
The home has updated tile flooring in the living room & lovely vinyl plank in the primary bedroom suite. The exterior of the home was freshly painted in the last two years; as was the roof and gutters.
This home has had only one owner since being built & the back yard was specifically planted to provide you with an abundance of food! Your orchard includes cherimoya, 2 mangosteen, 5 avocados, cashew, white & purple star apples, atemoya, black sapote, soursop, 2 mac nuts, cacao, starfruit lychee, mountain apple, longan, coconut, banana, jaboticaba, abiu, mango, red dragonfruit, papaya, pineapple, strawberry guava and a clove tree! Amazing! You have a two-car garage with a side covered area that can be used for additional parking or a



covered outdoor seating area! And to top all of this off you have a nearly new studio/workshop! With 228 sq ft and electric -it is currently used as an art studio - you can use this to best suit your lifestyle!
Located in Hawaiian Paradise Park, an oceanfront community, about a 30 minute drive to Hilo with the historic bayfront, beach parks, airport & amenities of all kinds. Less than 15 minutes to either Keaau or Pahoa Village, both with restaurants, schools, shopping, parks & much more!
Come live your dream lifestyle!

Built in 2005

Essential Information

MLS® #	724429
Price	\$557,500
Bedrooms	3
Bathrooms	2.00
Full Baths	2
Square Footage	1,522
Acres	1.00
Year Built	2005
Type	Residential
Sub-Type	Single Family Residence
Status	Active

Community Information

Address	15-1994 16th Ave
Subdivision	HAWAIIAN PARADISE PARK
City	Keaau
State	HI
Zip Code	96749

Amenities

Parking	Attached, Covered
View	Garden

Interior

Appliances Dryer, Microwave Hood, Other, Range, Washer

Exterior

Lot Description Interior Lot

Additional Information

Date Listed October 8th, 2025

Days on Market 5

Zoning A-1A

Listing Details

Listing Office Big Island Homes & Land Co., Ltd.

IDX is deemed reliable but is not guaranteed accurate by the Hawaii Information Service, Inc. Listing Service. © 2025 Hawaii Information Service. All Rights Reserved.

Listing information last updated on October 13th, 2025 at 4:04am HST