

# \$125,000 - 16-1792 37th Ave, Kurtistown

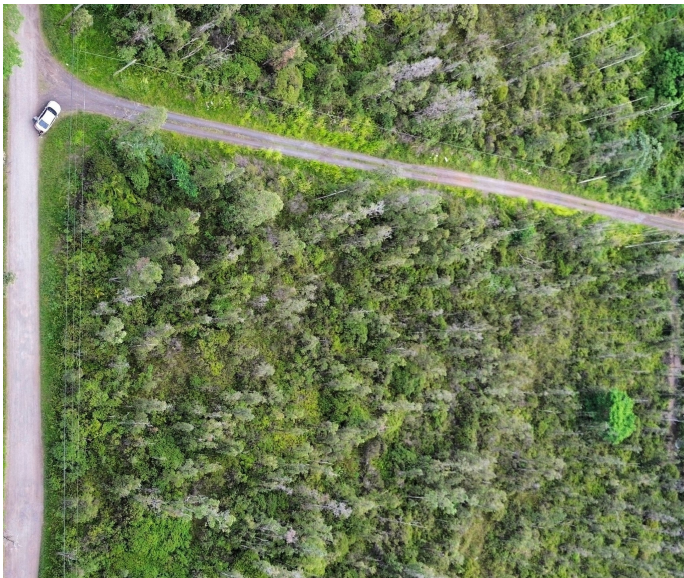
MLS® #719769

**\$125,000**

0 Bedroom, 0.00 Bathroom,  
Land on 2.00 Acres

ORCHID LAND ESTATES, Kurtistown, HI

Prime Corner Lot with Survey Completed!<br><br>Among many long spaghetti lots, this property's shape is very desirable and rare. This fantastic lot offers endless potential for your next project, whether you're building your dream home, an investment property, or looking to develop in a growing area. Located at the intersection of 37th and Kiele, this lot provides easy access from multiple streets.<br><br>The property comes with an already completed survey, saving you time and money, and offering confidence in the boundaries and topography of the land. With utilities nearby and a location thatâ€™s just minutes away from local amenities, and major roadways, this lot is ideal for development. Don't miss out on this incredible opportunity to own a piece of land with great location and no guesswork! Whether youâ€™re a developer or someone looking to build your future, this lot is ready for your vision.



## Essential Information

MLS® #	719769
Price	\$125,000
Bathrooms	0.00
Acres	2.00
Type	Land
Status	Active

## Community Information

Address	16-1792 37th Ave
Subdivision	ORCHID LAND ESTATES
City	Kurtistown
State	HI
Zip Code	96760

### **Exterior**

Lot Description	Corner Lot, Wooded
-----------------	--------------------

### **Additional Information**

Date Listed	March 31st, 2025
Days on Market	196
Zoning	A-3A

### **Listing Details**

Listing Office	Coldwell Banker Island Properties - Hilo
----------------	--

IDX is deemed reliable but is not guaranteed accurate by the Hawaii Information Service, Inc. Listing Service. © 2025 Hawaii Information Service. All Rights Reserved.

Listing information last updated on October 13th, 2025 at 1:20pm HST