

\$325,000 - N/A, Kurtistown

MLS® #718566

\$325,000

0 Bedroom, 0.00 Bathroom,
Land on 5.14 Acres

OLAA HOMESTEAD RESERVATION LOTS,
Kurtistown, HI

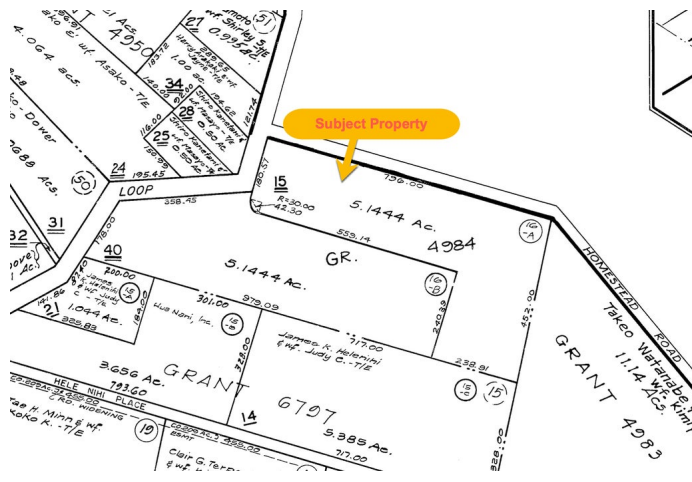
Now available: 5+ acres of rolling hills just above Kamehameha Schools and Keaau town center.

Situated at a comfortable 700-foot elevation, historic Hale Pule Loop is renowned for its nearly two-century-old Hawaiian Church, lush grasslands, and beautiful bamboo groves.
Features:

- Completed subdivision with installed water meter.
- Ideal elevation for comfortable living and farming.
- Prime agricultural location amid top-producing tropical fruit farms
- Scenic Mauna Kea views.
- Paved, county-maintained road with overhead electrical and high-speed internet connectivity.

Located just 15 minutes from Hilo’s shopping and university districts, and approximately 20 minutes from Hawaii Volcanoes National Park.

Buyers and their agents to confirm tax and utility details with Hawai'i County.



Essential Information

MLS® #	718566
Price	\$325,000
Bathrooms	0.00
Acres	5.14
Type	Land
Status	Active

Community Information

Address	N/A
Subdivision	OLAA HOMESTEAD RESERVATION LOTS
City	Kurtistown
State	HI
Zip Code	96760

Exterior

Lot Description	Grassy
-----------------	--------

Additional Information

Date Listed	April 14th, 2025
Days on Market	182
Zoning	A-5A

Listing Details

Listing Office	COMPASS
----------------	---------

IDX is deemed reliable but is not guaranteed accurate by the Hawaii Information Service, Inc. Listing Service. © 2025 Hawaii Information Service. All Rights Reserved.
Listing information last updated on October 13th, 2025 at 10:34am HST