

\$67,000 - 94-1691 Kaulua St, Naalehu

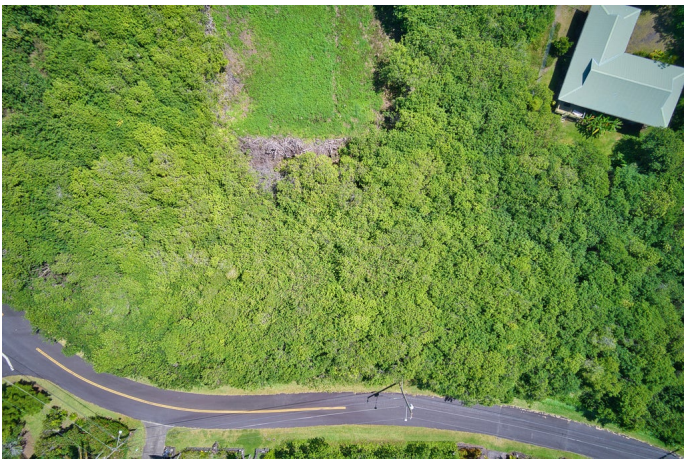
MLS® #717986

\$67,000

0 Bedroom, 0.00 Bathroom,
Land on 0.32 Acres

DISCOVERY HARBOUR, Naalehu, HI

**** Seller Financing Available****
Located at approximately 1,300 feet in elevation, this roughly one-third-acre lot offers a great opportunity to build in the peaceful community of Discovery Harbour. County water and power are available, and CC&Rs can be found on the Community Association’s website. Adjacent lot TMK 3-9-4-19-140 is also available, offering the potential for nearly two-thirds of an acre. Discovery Harbor features paved roads, a mild climate, and scenic surroundings, with downtown Naalehu around 10 minutes away for shopping, dining, and daily conveniences. Buyer to verify any potential ocean views.



Essential Information

MLS® #	717986
Price	\$67,000
Bathrooms	0.00
Acres	0.32
Type	Land
Status	Active

Community Information

Address	94-1691 Kaulua St
Subdivision	DISCOVERY HARBOUR
City	Naalehu
State	HI
Zip Code	96772

Amenities

View Mountain(s), Other, Sunrise

Exterior

Lot Description Wooded

Additional Information

Date Listed February 3rd, 2025

Days on Market 252

Zoning A-1A

HOA Fees 12.5

HOA Fees Freq. Monthly

Listing Details

Listing Office Coldwell Banker Island Properties - Kona

IDX is deemed reliable but is not guaranteed accurate by the Hawaii Information Service, Inc. Listing Service. © 2025 Hawaii Information Service. All Rights Reserved.

Listing information last updated on October 13th, 2025 at 6:34pm HST