

\$250,000 - 16-300 Ainaloa Blvd, Pahoa

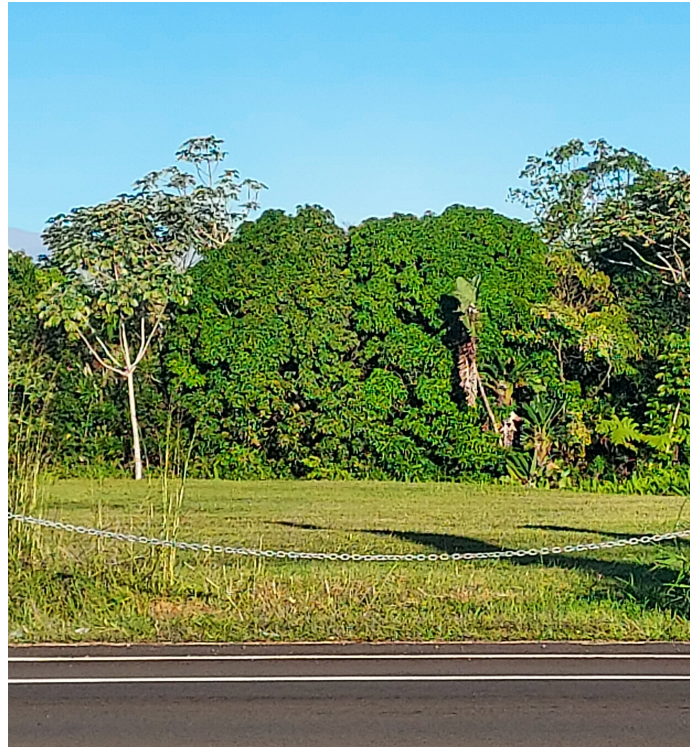
MLS® #716140

\$250,000

0 Bedroom, 0.00 Bathroom,
Land on 1.00 Acres

ORCHID LAND ESTATES, Pahoa, HI

A RARE FIND...AN INCREDIBLE OPPORTUNITY TO OWN THE FINEST 1 ACRE LOT FULLY MANICURED WITH ROCK WALLS IN A PRIME LOCATION ON AINALOA BLVD. READY TO BUILD, ITS YOUR LUCKY DAY. PROPERTY COMES WITH HOUSE PLANS FOR A 3 BEDROOM 2 BATH PLUS A 1 BEDROOM 1 BATH MOTHER IN LAWS QUARTERS. POWER POLE ON THIS LOT WITH UNDERGROUND UTILITIES AVAILABLE. LOVELY TOWERING PINE TREES ADORN THE FRONTAGE . POSSIBILITY OF BUILDING MORE HOMES ON THIS BEAUTIFUL ACRE. DUE DILIGENCE ENCOURAGED. IDEAL LOCATION DIRECTLY ACROSS THE AINALOA POST OFFICE BOXES AND THE SUBDIVISION OFFICE. SHORT DRIVE TO THE MAKUU FARMERS MARKET, PUNA KAI SHOPPING CENTER, LONGS DRUGS, RESTAURANTS AND THE KEAAU SHOPPING CENTER. A GOLDEN OPPORTUNITY AWAITS YOU...TRANSFER FEE OF \$300. GO TO [HTTP://ORCHIDLAND.ORG](http://orchidland.org) FOR MORE INFORMATION.



Essential Information

MLS® #	716140
Price	\$250,000
Bathrooms	0.00

Acres	1.00
Type	Land
Status	Active Under Contract

Community Information

Address	16-300 Ainaloa Blvd
Subdivision	ORCHID LAND ESTATES
City	Pahoa
State	HI
Zip Code	96778

Exterior

Lot Description	Cleared
-----------------	---------

Additional Information

Date Listed	November 27th, 2024
Days on Market	320
Zoning	A-1A

Listing Details

Listing Office	RE/MAX Properties
----------------	-------------------

IDX is deemed reliable but is not guaranteed accurate by the Hawaii Information Service, Inc. Listing Service. © 2025 Hawaii Information Service. All Rights Reserved.
Listing information last updated on October 13th, 2025 at 6:19pm HST