

\$45,000 - 11-3226 Pa Alii St, Volcano

MLS® #716098

\$45,000

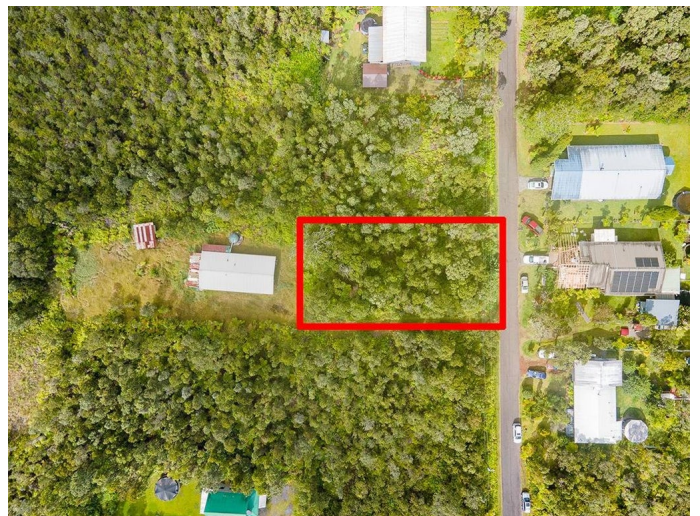
0 Bedroom, 0.00 Bathroom,
Land on 0.23 Acres

ROYAL HAWAIIAN ESTATES, Volcano, HI

Build your dream home on this gorgeous front lot lush with hapu'u ferns interspersed with ohia trees in Royal Hawaiian Estates. Neighbor in the back lot has its own driveway, so there is no easement issue. Enjoy cooler climate, paved roads, access to overhead power, no CC&R's. Listen to birdsong as you take walks in the quiet neighborhood or explore numerous trails at nearby Volcano National Park. Volcano Village is a short drive away for restaurants, general stores, and gas. Go bowling or take in a movie at Kilauea Military Camp, attend special programs at Volcano National Park, develop your artistic side by taking classes at the Volcano Art Center, play a round of golf at Volcano Golf & Country Club, or go wine tasting at Volcano Winery. Punalu'u Beach is a 40-minute drive away and offers a beautiful expanse of high-quality black sand, along with picnic tables and amenities for a relaxing day. Hilo is a 50-minute drive away should you miss the hustle and bustle.

Essential Information

MLS® #	716098
Price	\$45,000
Bathrooms	0.00
Acres	0.23
Type	Land
Status	Active



Community Information

Address	11-3226 Pa Alii St
Subdivision	ROYAL HAWAIIAN ESTATES
City	Volcano
State	HI
Zip Code	96785

Exterior

Lot Description	Wooded
-----------------	--------

Additional Information

Date Listed	November 25th, 2024
Days on Market	322
Zoning	A-1A

Listing Details

Listing Office	Coldwell Banker Island Properties - Hilo
----------------	--

IDX is deemed reliable but is not guaranteed accurate by the Hawaii Information Service, Inc. Listing Service. © 2025 Hawaii Information Service. All Rights Reserved.
Listing information last updated on October 13th, 2025 at 9:04pm HST